



## Category 5e Modular Jacks

Through innovation and technological advancements, the Xcelerator™ XJ5e jack sets itself apart from the competition. Combining superior Category 5e component performance with a reliable QuickLace™ termination process, the XJ5e jack leads the industry with its unique multi-patent design features.

Every aspect of the XJ5e series jack has been precision engineered for optimum performance, from the printed circuit board to the clear gray stuffer cap. The XJ5e features numerous innovations including Hubbell's exclusive QuickLace termination process, a unique universal wiring system, "patented" angled IDC 110 towers, one-piece latching stuffer cap, optional hinged dust cover, encapsulated high-density construction.

# HUBBELL

## Hubbell Premise Wiring

The XJ5e is third party verified by ETL (passive) for ANSI/TIA/EIA-568-B (Category 5e) component specifications, providing unsurpassed headroom, consistently achieving positive PSACR beyond 175MHz when configured in a worst-case, 4-connector channel configuration. The XJ5E is ETL Verified to meet all IEEE 802.3ab specifications (active) for error-free Gigabit Ethernet transmissions, as part of ETL's Total Solution Program.

The Xcelerator™ GX2 modular jack series easily installs into all Hubbell Premise Wiring Infin-e-Station™ rear-loading fixed plates, front-loading modules and frames, multimedia housings and furniture plates. The XJ5e can be utilized in a wide variety of multimedia configurations in combination with our Snap Fit (SF) modules, customizing all work stations.

### Performance

- Exceeds the Category 5e EIA/TIA-568-B.2 component requirements; ETL Verified component performance
- Component of ETL's Total Solutions Program

### Stuffer Cap

Clear, gray stuffer cap provides secure strain relief through a positive "snap" latching mechanism

### Termination Towers

Angled, staggered IDC towers designed for easy pair splitting, conductor lacing, punch-down, providing exceptional strain relief



### Density

Compact profile for high capacity multimedia applications

### Dust Cover

Optional hinged dust cover protects port from unwanted environmental and non-environmental elements

### Keystone

Keystone design mounts in any Hubbell Infin-e-Station™ plate, frame, module, furniture plate or multimedia housing

### Universal Wiring

Two distinct easy-to-follow labels provide a universal wiring system that eliminates wiring confusion, permits termination to either T568A or T568B

### PCB/IDC

Angled, staggered IDC 110 contact configuration and printed circuit board design provides optimal product performance

### Nose Contacts

Innovative front-to-back contact design provides contact separation increasing performance and controlling crosstalk

### Jack Panel

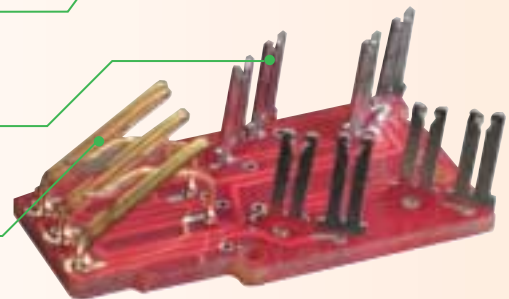
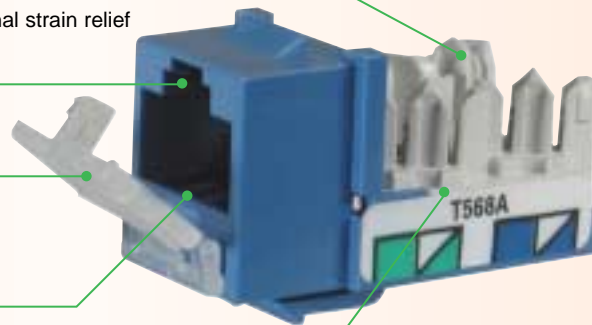
Use in unloaded jack panel available for flexible rack mount applications for 16, 24, 36 and 48-port configurations

### Colors

Available in 13 colors, providing identification options for network configurations



BK B EI GL GY GN OW OR P R TI Y W



## Xcelerator™ SPECIFICATIONS

### Construction Materials

- Housing - Flame Retardant (UL 94 V-0)
- Termination Towers - Flame Retardant (UL 94 V-0)
- Termination/Stuffer cap - Flame-Retardant (UL 94 V-0)
- Dust Cover - Polypropylene

### Contact Materials

- Nose Contacts - Beryllium Copper base metal with a minimum of 50 micro-inch Gold Plating over Nickel underplating
- IDC 110 Contacts - Phosphorus Bronze base metal with 100 micro-inch Tin Lead 60/40 plating over Nickel underplating

### Performance Specifications

- Confirmed contact performance over full range of (FCC Specification) deflection limits
- 2,500+ mating cycles
- Insulation Displacement Contact (IDC) accommodates 22 to 26 AWG/Solid
- 10+ IDC terminations for same size AWG
- Accepts FCC 6-position plugs
- Guaranteed positive PSACR to 175MHz (channel)

### Nationally Recognized Listings and Verifications

- ANSI/TIA/EIA-568-B (Category 5e) component compliant
- IEEE 802.3ab Gigabit Ethernet verified
- ETL Verified for Category 5e component performance
- UL Verified Category 5e
- UL Listed 1863
- CSA Certified
- FCC part 68.5, subpart F compliant
- IEC-603-7 compliant
- ISO 11801 Class D compliant

## ORDER INFORMATION

### SPEEDGAIN™ Xcelerator™ Category 5e Jacks

Unit Package	1 per Bag	25 per Bag
Order Qty.	Carton of 25	Bag of 25
Color	Catalog No.	Catalog No.
Black	<b>HXJ5EBK</b>	<b>HXJ5EBK25</b>
Blue	<b>HXJ5EB</b>	<b>HXJ5EB25</b>
Electric Ivory	<b>HXJ5EEI</b>	<b>HXJ5EEI25</b>
Gold	-	<b>HXJ5EGL25</b>
Gray	<b>HXJ5EGY</b>	<b>HXJ5EGY25</b>
Green	<b>HXJ5EGN</b>	<b>HXJ5EGN25</b>
Office White	<b>HXJ5EOW</b>	<b>HXJ5EOW25</b>
Orange	<b>HXJ5EOR</b>	<b>HXJ5EOR25</b>
Purple	-	<b>HXJ5EP25</b>
Red	<b>HXJ5ER</b>	<b>HXJ5ER25</b>
Telco Ivory	<b>HXJ5ETI</b>	<b>HXJ5ETI25</b>
White	<b>HXJ5EW</b>	<b>HXJ5EW25</b>
Yellow	<b>HXJ5EY</b>	<b>HXJ5EY25</b>

### ACCESSORIES

Hinged Dust cover	Qty.	Catalog No.
Xcelerator™ Hinged Dust Cover	25-Pack	<b>HXJDC25</b>

### "Jack Knuckles" Termination Tool

Description	Qty.	Catalog No.
Hand Termination Tool	1	<b>HXTA</b>

### "1-Punch" 4-Pair Punch-Down Tool

Description	Qty.	Catalog No.
**Xcelerator™ 4-Pair Punch-Down Tool	1	<b>TX4P</b>
**Xcelerator™ 4-Pair Replacement Head	1	<b>TX4PH</b>

\*\*Available 1Q-2002



### Hubbell Premise Wiring

HUBBELL INCORPORATED (Delaware)

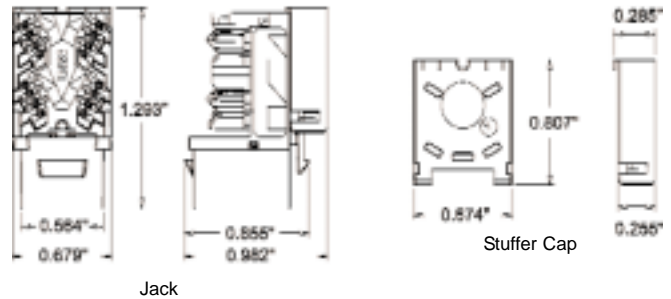
14 Lord's Hill Road • Stonington, CT 06378-0901 • (860) 535-8326 • 800-626-0005  
 Fax: (860) 535-8328 • Internet site: <http://www.hubbell-premise.com>

### Worldwide Locations

Hubbell Premise Wiring, Asia Pacific	852-2836-7131	Fax: 852-2836-7132
Hubbell Canada Inc.	905-839-1138	Fax: 905-839-9108
Hubbell Premise Wiring, China	86-21-6217-3478	Fax: 86-21-6217-3481
Hubbell Premise Wiring, Europe	44-(0)1234-848550	Fax: 44-(0)1234-856190
Hubbell Int'l. Inc., Korea Branch	82-2-(0)2607-1363	Fax: 82-2-(0)2603-7386
Hubbell Premise Wiring, Latin America	305-251-4236	Fax: 305-251-4087

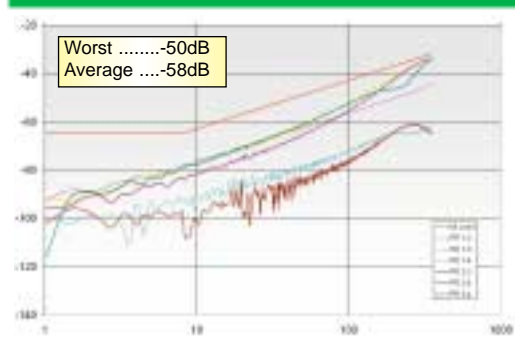
Hubbell de Mexico, S.A. de C.V.	52-5-575-2022	Fax: 52-5-559-8626
Hubbell Premise Wiring, Middle East	971-4-393-4192	Fax: 971-4-393-4194
Hubbell Premise Wiring, Puerto Rico	787-460-3380	Fax: 787-751-7309
Hubbell-Taian Co., Ltd., Taiwan	886-2-(0)2515-0855	Fax: 886-2-(0)2515-0899
Hubbell Incorporated, Turkey	90-216-414-8147	Fax: 90-216-414-8148
Hubbell Premise Wiring, Venezuela	58-81-820323	Fax: 58-81-820323

## DIMENSIONS

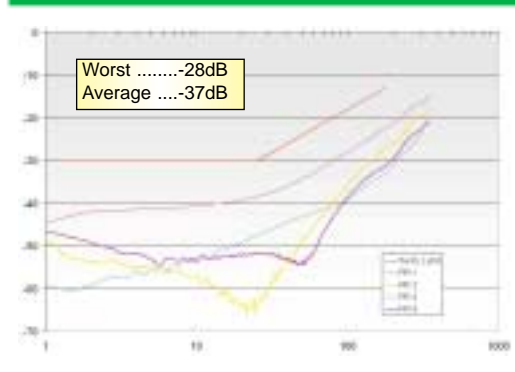


## CATEGORY 5E COMPONENT DATA

### NEXT Values @ 100MHz



### RETURN LOSS Values @ 100MHz



## Termination Tools

### Jack Knuckles

- ◆ Accommodates HD and XJ series jacks
- ◆ Textured hand grip
- ◆ Pressure-fit cable holder
- ◆ Screws to standard 19" rack upright for jack panel termination

### 1-Punch\*\*

- ◆ Terminates all 4-pairs in one shot
- ◆ 75% termination time/labor savings
- ◆ Specifically designed for Xcelerator™ Jack only

\*\*Available 2Q-2002

