

SECTION CONTENTS

COMPUTER BRACKETS 123-125

COMPUTER BRACKET WORKSHEET. 126-127

MOUNTING BRACKETS 118-119

PC BOARD ACCESSORIES

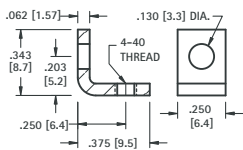
Board Guides 120-121

Card Ejectors 120

THREADED MOUNTING BRACKETS

THREADED MOUNTING BRACKETS

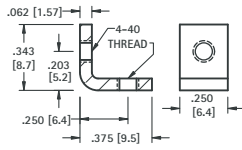
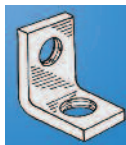
4-40 THREAD



CAT. NO. 612

MATERIAL:
.062 (1.57) Steel, Zinc Plate

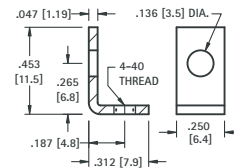
4-40 THREAD



CAT. NO. 621

MATERIAL:
.062 (1.57) Steel, Zinc Plate

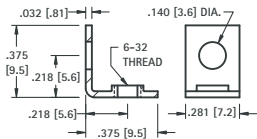
4-40 THREAD



CAT. NO. 616

MATERIAL:
.047 (1.19) Brass, Tin Plate

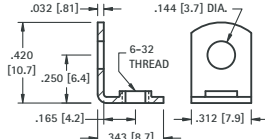
6-32 THREAD



CAT. NO. 634

MATERIAL:
.032 (.81) Brass, Nickel Plate

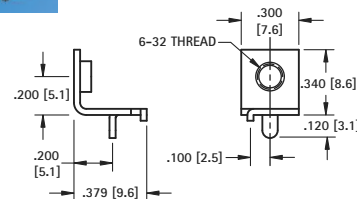
6-32 THREAD



CAT. NO. 614

MATERIAL:
.032 (.81) Brass, Tin Plate

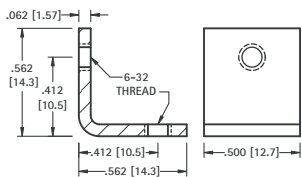
6-32 THREAD



CAT. NO. 632

MATERIAL:
.032 (.81) Brass, Tin Plate

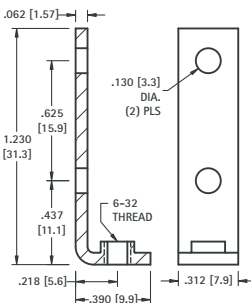
6-32 THREAD



CAT. NO. 4334

MATERIAL:
.062 (1.57) Steel, Nickel Plate

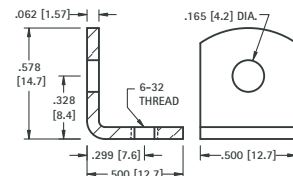
6-32 THREAD



CAT. NO. 708

MATERIAL:
.062 (1.57) Steel, Nickel Plate

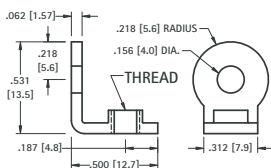
6-32 THREAD



CAT. NO. 617

MATERIAL:
.062 (1.57) Steel, Tin Plate

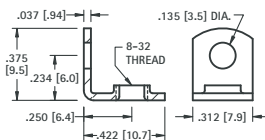
6-32 OR 8-32 THREAD



CAT. NO.	THREAD
4332	6-32
4333	8-32

MATERIAL:
.062 (1.57) Brass, Nickel Plate

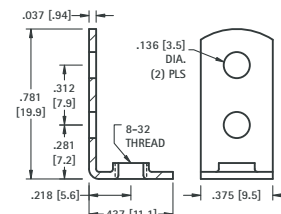
8-32 THREAD



CAT. NO. 611

MATERIAL:
.037 (.94) Brass, Tin Plate

8-32 THREAD

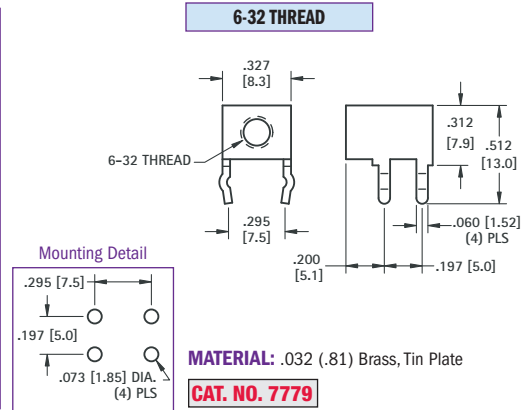
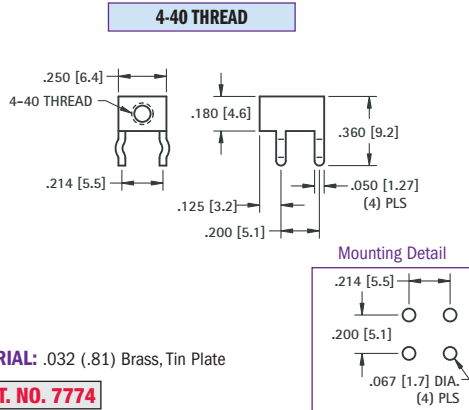
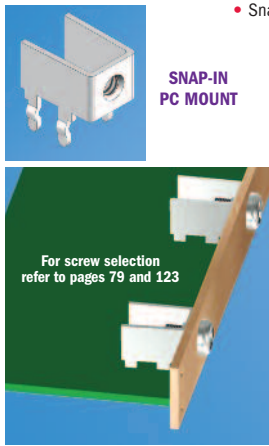


CAT. NO. 631

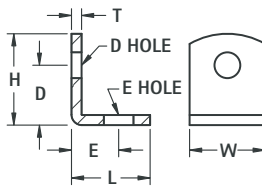
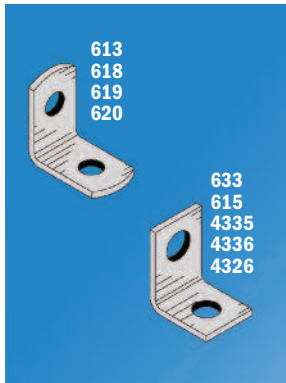
MATERIAL:
.037 (.94) Steel, Tin Plate

SNAP-IN THREADED PC MOUNT BRACKETS

- Snaps in for wave soldering • Reduces assembly time • Easily mount into predrilled or punched holes • Stable no rock design



UNIVERSAL CLEAR HOLE BRACKETS



CAT. NO.	H	L	W	D	D HOLE DIAMETER	E	E HOLE DIAMETER	T	MATERIAL	FINISH
633	.375 (9.5)	.375 (9.5)	.281 (7.1)	.218 (5.5)	.140 (3.6)	.218 (5.5)	.140 (3.6)	.032 (.81)	Brass	Nickel
613	.390 (9.9)	.453 (11.5)	.375 (9.5)	.234 (5.9)	.147 (3.7)	.299 (7.6)	.128 (3.3)	.032 (.81)	Brass	Nickel
615	.420 (10.7)	.343 (8.7)	.281 (7.1)	.281 (7.1)	.144 (3.7)	.203 (5.2)	.128 (3.3)	.032 (.81)	Brass	Tin
4335	.562 (14.3)	.562 (14.3)	.500 (12.7)	.412 (10.5)	.120 (3.0)	.411 (10.4)	.120 (3.0)	.062 (1.57)	Steel	Nickel
4336	.562 (14.3)	.562 (14.3)	.500 (12.7)	.412 (10.5)	.144 (3.7)	.412 (10.5)	.144 (3.7)	.062 (1.57)	Steel	Nickel
618	.628 (16.0)	.628 (16.0)	.375 (9.5)	.378 (9.6)	.169 (4.3)	.378 (9.6)	.169 (4.3)	.050 (1.27)	Brass	Tin
619	.687 (17.4)	.687 (17.4)	.375 (9.5)	.500 (12.7)	.144 (3.7)	.500 (12.7)	.144 (3.7)	.032 (.81)	Steel	Tin
4326	1.013 (25.7)	.487 (12.4)	.312 (7.9)	.816 (20.7)	.140 (3.6)	.332 (8.4)	.140 (3.6)	.050 (1.27)	Steel	Nickel
620	1.156 (29.4)	.656 (16.7)	.375 (9.5)	.906 (23.0)	.169 (4.3)	.420 (10.7)	.169 (4.3)	.032 (.81)	Steel	Tin

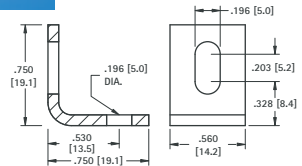
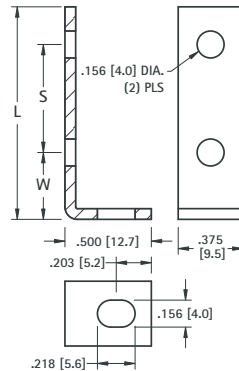
BOARD BRACKETS



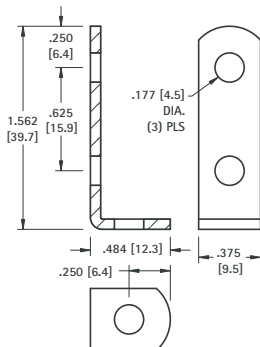
Originally designed for our line of standardized terminal boards; these brackets can also be used in other applications. See pages 148-149 for Turret Terminal Boards.

MATERIALS: .062 (1.57) Steel, Nickel Plate

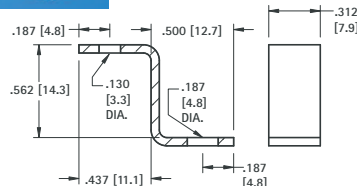
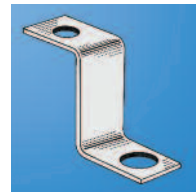
CAT. NO.	W	L	S
1570	.281 (7.1)	1.187 (30.1)	.750 (19.1)
1556	.375 (9.5)	1.625 (41.3)	1.000 (25.4)
1571	.281 (7.1)	1.625 (41.3)	1.187 (30.1)
1567	.375 (9.5)	2.125 (54.0)	1.500 (38.1)
1568	.375 (9.5)	2.625 (66.7)	2.000 (50.8)
1569	.375 (9.5)	3.125 (79.4)	2.500 (63.5)



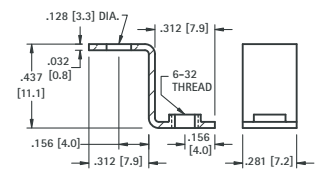
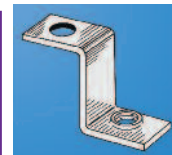
CAT. NO. 4337 **MATERIAL:** .080 (2.03) Aluminum



CAT. NO. 1564 **MATERIAL:** .062 (1.57) Steel, Nickel Plate

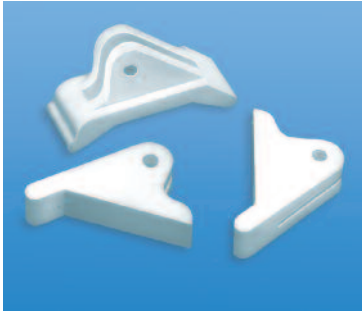


CAT. NO. 4325 **MATERIAL:** .050 (1.27) Steel, Nickel Plate



CAT. NO. 630 **MATERIAL:** .032 (.81) Brass, Tin Plate

LEVER ACTION PC CARD EJECTORS



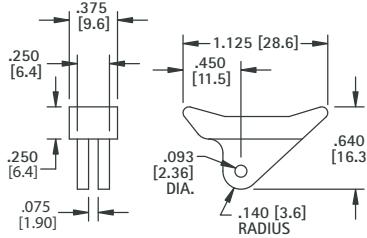
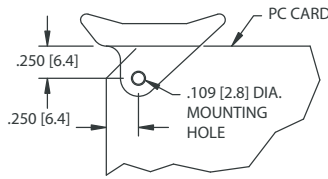
Card ejectors offer a simple and reliable way of installing and ejecting circuit boards. Card ejectors reduce the stress on board connectors by improper removal of board. Ejectors also protect components

on board from damage during removal or installation. Ejectors supplied with stainless steel pin to assure quick assembly of ejector to card.

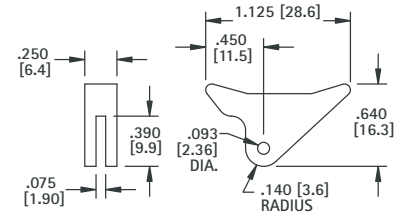
- Designed for .062 (1.57) PC cards.
- Level action ejectors aids card insertion and extraction.
- Supplied complete with stainless steel spring pin.

MATERIAL:
White Nylon 6/6, UL Rated 94V-2

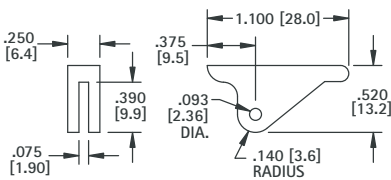
CARD MOUNTING DIMENSIONS



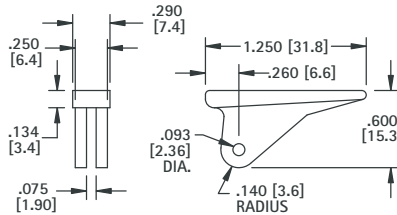
CAT. NO. 8640



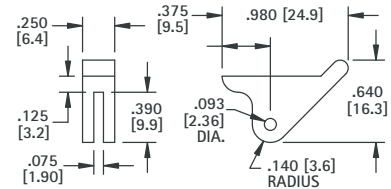
CAT. NO. 8641



CAT. NO. 8642



CAT. NO. 8643



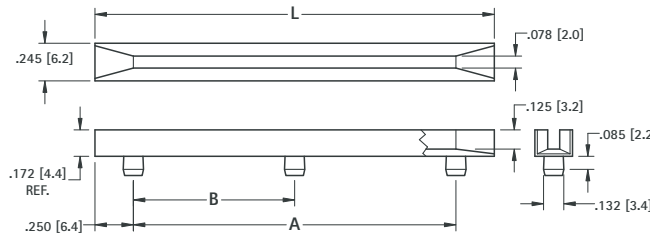
CAT. NO. 8644

HORIZONTAL TYPE PC BOARD GUIDES

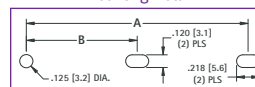


Guides may be used horizontally or vertically and snap into .125 (3.2) diameter holes. Narrow width allows maximum density and optimum airflow. Simple press-fit, secure installation. No special tools required to install.

- Sturdy Nylon construction
- Mounts into chassis with out tools
- Assures proper alignment of board
- Quick and easy installation of board.



Mounting Detail



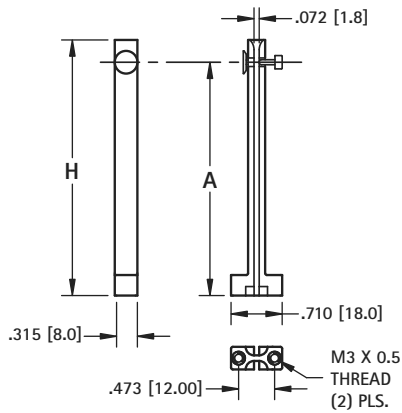
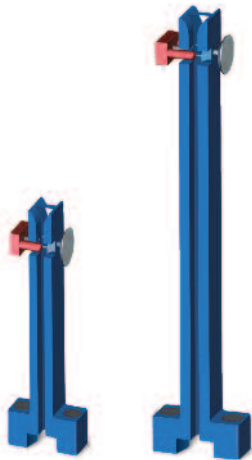
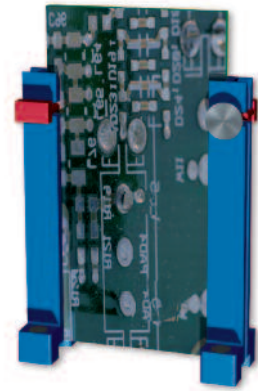
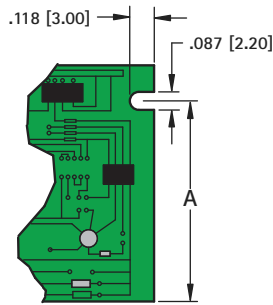
MATERIAL:
Natural Nylon 6/6, UL Rated 94V-2

CAT. NO.	L	A	B
8620	2.5 (63.5)	2.0 (50.8)	-
8621	3.0 (76.2)	2.5 (63.5)	-
8622	3.5 (88.9)	3.0 (76.2)	-
8623	4.0 (101.6)	3.5 (88.9)	-
8624	4.5 (114.3)	4.0 (101.6)	-
8625	5.0 (127.0)	4.5 (114.3)	-
8626	5.5 (139.7)	5.0 (127.0)	-
8627	6.0 (152.4)	5.5 (139.7)	-
8628	6.5 (165.1)	6.0 (152.4)	-
8629	7.0 (177.8)	6.5 (165.1)	-
8630	7.0 (177.8)	6.5 (165.1)	3.25 (82.6)
8631	7.5 (190.5)	7.0 (177.8)	-
8632	7.5 (190.5)	7.0 (177.8)	3.50 (88.9)
8633	8.0 (203.2)	7.5 (190.5)	-
8634	8.0 (203.2)	7.5 (190.5)	3.75 (95.3)
8635	8.5 (215.9)	8.0 (203.2)	-
8636	8.5 (215.9)	8.0 (203.2)	4.00 (101.6)

VERTICAL PC BOARD GUIDES

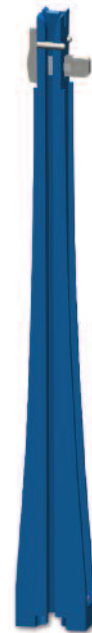
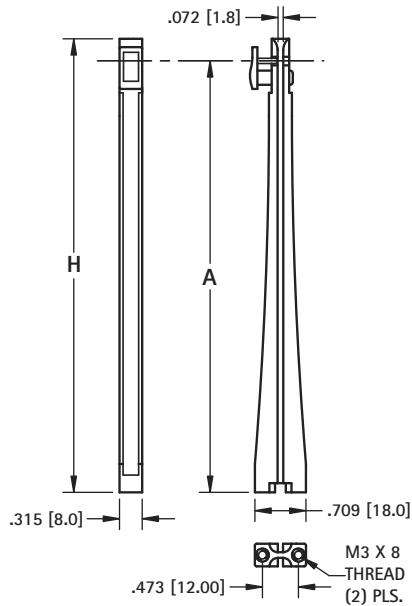
Vertical board guides provide for a quick and easy assembly of circuit boards. Sturdy design assures boards stay square. These guards can be mounted to chassis or directly to a mother board. Mounting holes have brass threaded inserts to assure secure mounting of guide. After bracket is installed, boards are quickly locked into place or released for repair or upgrades. Locking pins at the top of the bracket can be set/released using finger pressure, no tools are required.

- Brass threaded inserts assure sturdy connection to chassis or mother board.
- Available for circuit boards 1.970" to 6.300" tall.
- Locking pin keeps circuit board locked into place.
- M3 mounting screws available.
- All brackets use same footprint, no redesign of mounting holes required if changing bracket height.



CAT. NO.	H HEIGHT	A LOCK PIN HEIGHT
8645	1.970 (50.0)	1.650 (42.0)
8646	2.560 (65.0)	2.250 (56.5)
8647	3.540 (90.0)	3.200 (81.5)
8648	4.725 (120.0)	4.430 (112.5)

MATERIAL:
Guide: Nylon
Threaded Insert: Brass, Nickel plate



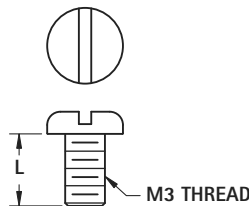
CAT. NO.	H HEIGHT	A LOCK PIN HEIGHT
8649	6.300 (160.0)	6.000 (152.0)

MATERIAL:
Guide: Polystyrene
Threaded Insert: Brass, Nickel plate

PC BOARD GUIDES

M3 MOUNTING SCREW

- Pan head screw
- Available in four lengths to accommodate most board thicknesses
- Flat washer available: P/N 4693



CAT. NO.	L
29311	6.00
29314	12.00
29316	16.00
29318	25.00

MATERIAL: Steel, Zinc plate

STANDARD BLANK BRACKETS

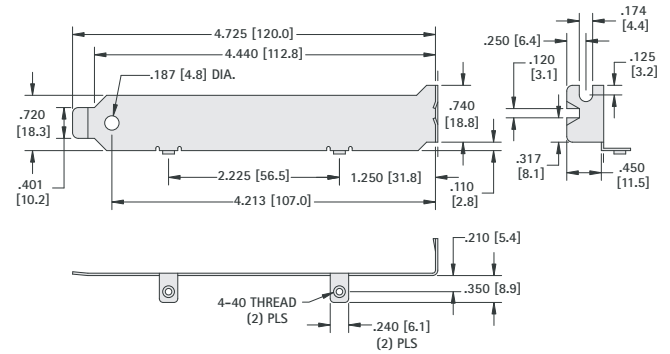


These computer brackets have been designed to accommodate a large variety of board sizes and heights. Available with tabs located properly for ESA/EISA or PCI formats. Blanks can be machined or stamped for prototype or low volume production. All brackets are nickel plated for a clean look and a protective finish. Standard cut-outs can be added to these blanks to suit your specific production needs. See page 118-119 for standard cut-outs and design worksheet.

- Premium quality
- Designed to fit all PC computers height brackets available
- Blanks available for "fillers"
- Fast delivery and cost effective tooling for special designs

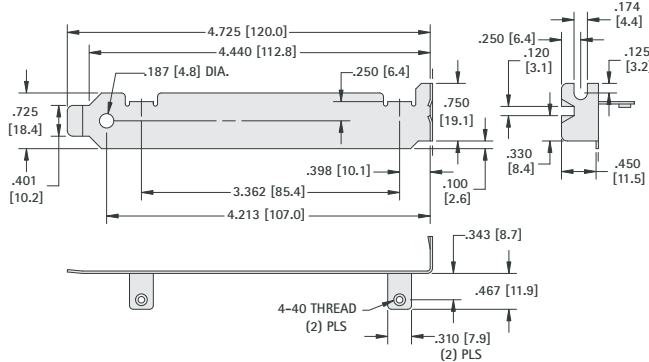
MATERIAL: .032 (.81) Steel, Matte Nickel Plate.

EISA/ISA

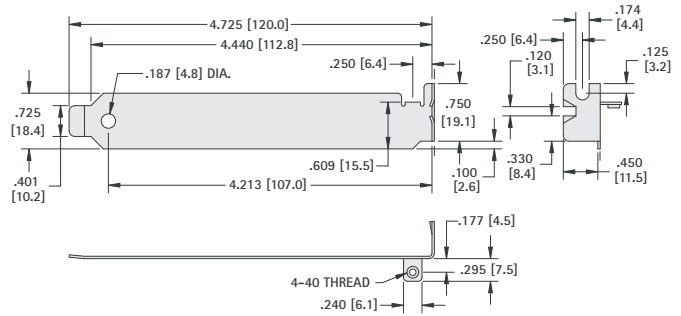


CAT. NO. 9202

PCI



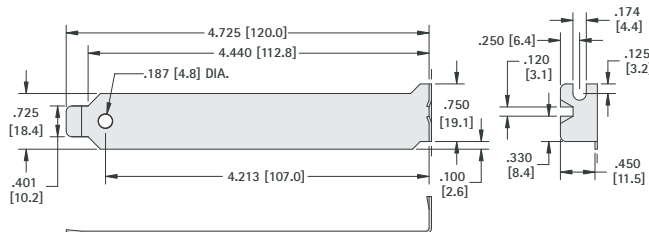
CAT. NO. 9203



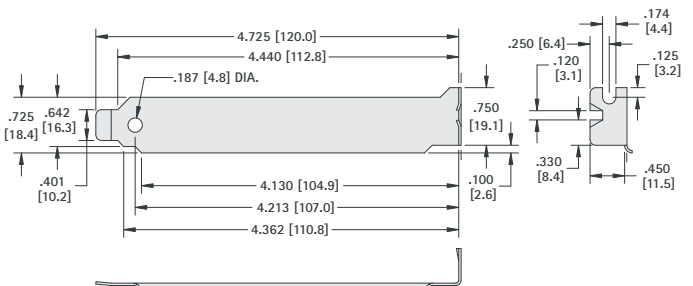
CAT. NO. 9204

EISA/ISA or PCI

- Reinforced with rib for extra strength



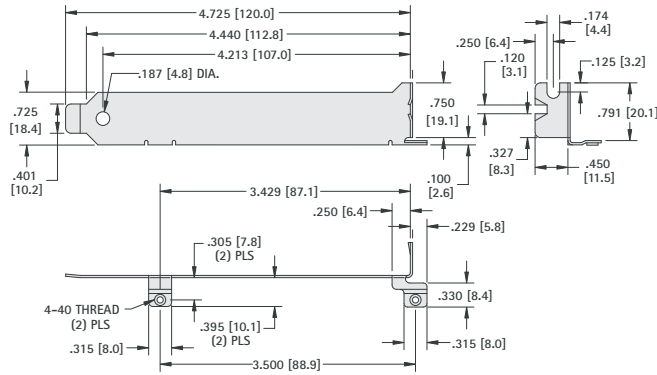
CAT. NO. 9200



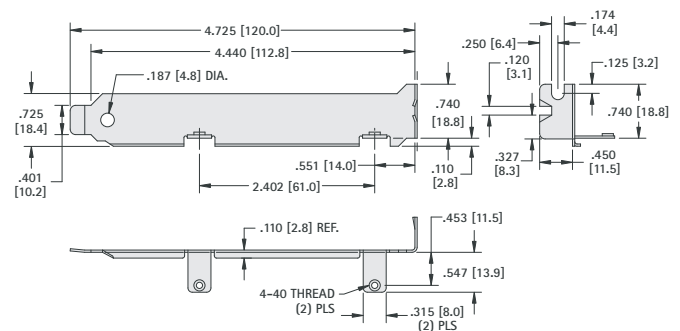
CAT. NO. 9201

STANDARD BLANK BRACKETS

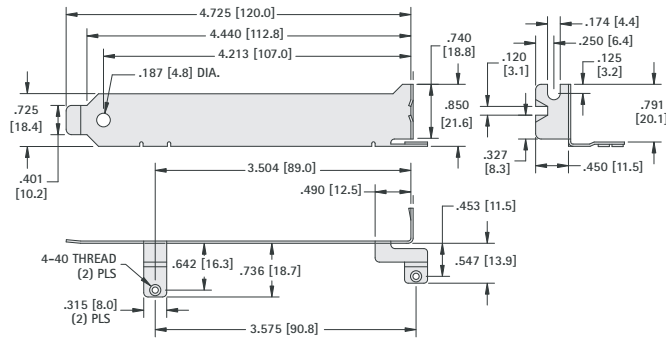
EISA/ISA



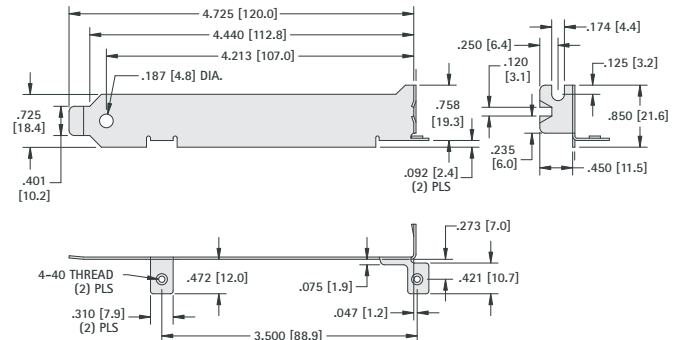
CAT. NO. 9205



CAT. NO. 9206

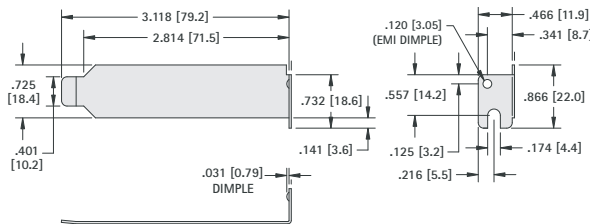


CAT. NO. 9207

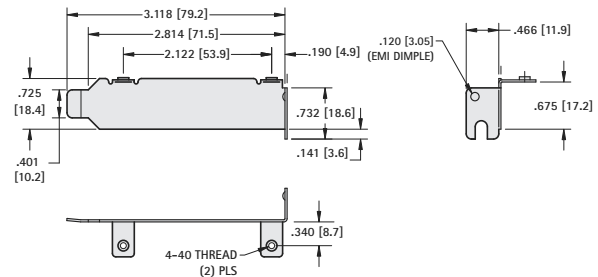


CAT. NO. 9208

LOW PROFILE BLANK BRACKETS



CAT. NO. 9230



CAT. NO. 9231

STANDARD COMPUTER BRACKETS

D-SUB

These computer brackets have been designed with a variety of holes and cutouts to connect most peripherals. The brackets shown reflect the most common configurations for most applications. If our standard brackets do not fit your

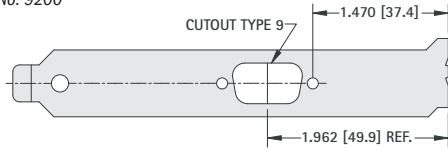
production requirements, we can fabricate a bracket to your exact specifications. Refer to pages 122 - 123 for blank dimensions and page 126 for standard cutout dimensions.

- Peripherals
- Video Cards
- Parallel/ Serial Ports
- External Hard Drives
- External CD Drives

9 PIN

For Bracket Dimensions Refer to Cat. No. 9200

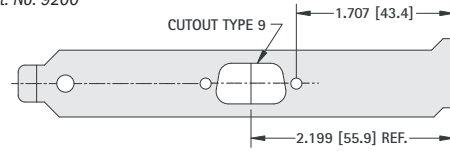
EISA/ISA



CAT. NO. 9200-1

For Bracket Dimensions Refer to Cat. No. 9200

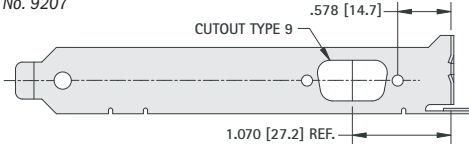
PCI



CAT. NO. 9200-2

For Bracket Dimensions Refer to Cat. No. 9207

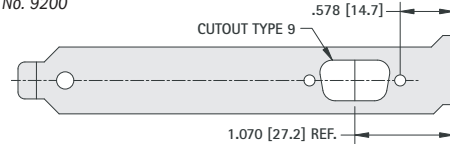
EISA/ISA



CAT. NO. 9207-1

For Bracket Dimensions Refer to Cat. No. 9200

EISA/ISA

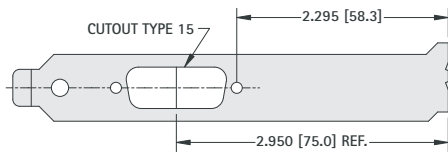


CAT. NO. 9200-16

15 PIN

For Bracket Dimensions Refer to Cat. No. 9200

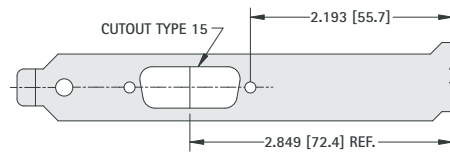
EISA/ISA



CAT. NO. 9200-3

For Bracket Dimensions Refer to Cat. No. 9200

EISA/ISA

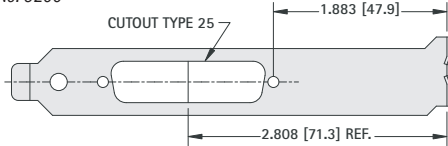


CAT. NO. 9200-11

25 - 37 PIN

For Bracket Dimensions Refer to Cat. No. 9200

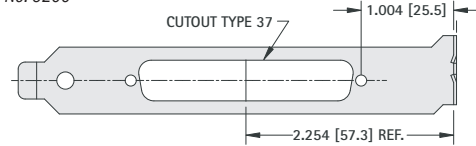
EISA/ISA - 25 PIN



CAT. NO. 9200-4

For Bracket Dimensions Refer to Cat. No. 9200

EISA/ISA - 37 PIN

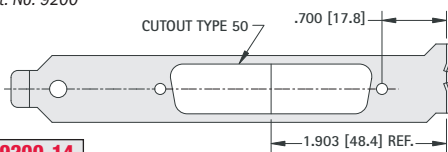


CAT. NO. 9200-5

50 PIN

For Bracket Dimensions Refer to Cat. No. 9200

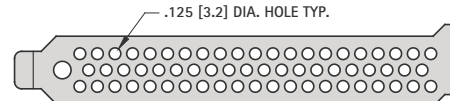
EISA/ISA - 50 PIN



CAT. NO. 9200-14

VENT

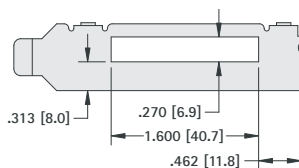
EISA/ISA OR PCI



CAT. NO. 9200-19

LOW PROFILE ACCESS PORT

For Bracket Dimensions Refer to Cat. No. 9231

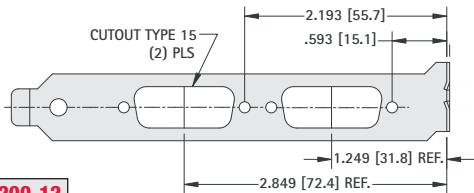


CAT. NO. 9231-1

MULTIPLE D-SUB

For Bracket Dimensions
Refer to Cat. No. 9200

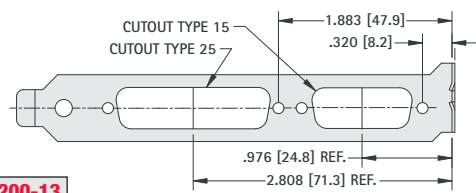
EISA/ISA



CAT. NO. 9200-12

For Bracket Dimensions
Refer to Cat. No. 9200

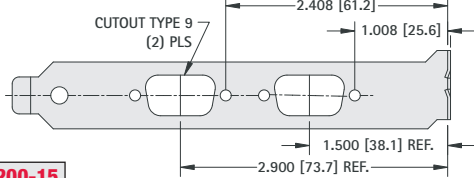
EISA/ISA



CAT. NO. 9200-13

For Bracket Dimensions
Refer to Cat. No. 9200

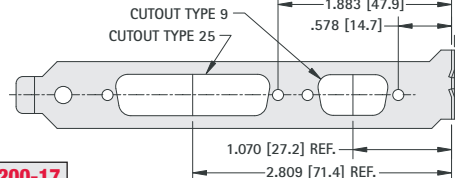
EISA/ISA



CAT. NO. 9200-15

For Bracket Dimensions
Refer to Cat. No. 9200

EISA/ISA

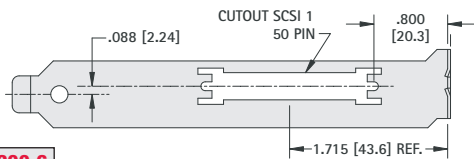


CAT. NO. 9200-17

SCSI

For Bracket Dimensions
Refer to Cat. No. 9200

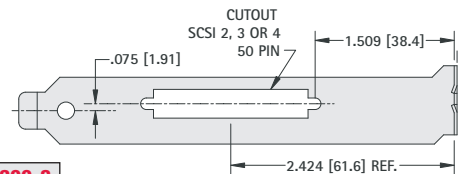
SCSI 1 - 50 PIN



CAT. NO. 9200-6

For Bracket Dimensions
Refer to Cat. No. 9200

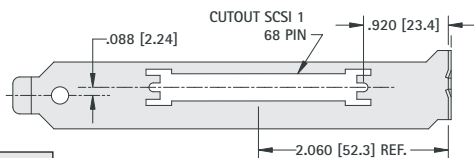
SCSI 2, 3 & 4 - 50 PIN



CAT. NO. 9200-8

For Bracket Dimensions
Refer to Cat. No. 9200

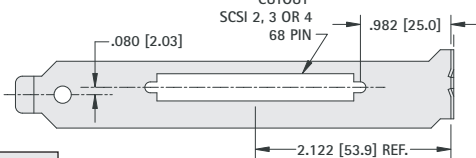
SCSI 1 - 68 PIN



CAT. NO. 9200-7

For Bracket Dimensions
Refer to Cat. No. 9200

SCSI 2, 3 & 4 - 68 PIN



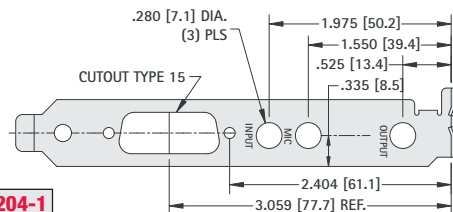
CAT. NO. 9200-9

PERIPHERAL

For Bracket Dimensions
Refer to Cat. No. 9204

EISA/ISA

SOUND CARDS

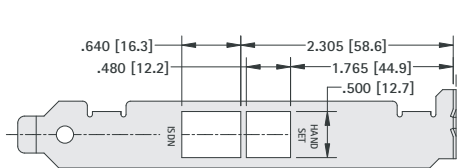


CAT. NO. 9204-1

For Bracket Dimensions
Refer to Cat. No. 9203

PCI

ISDN/PC FAX

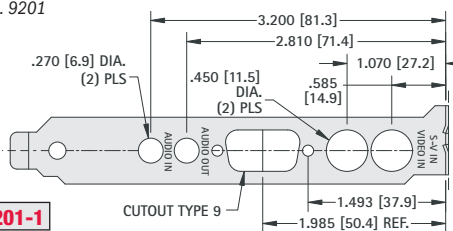


CAT. NO. 9203-1

For Bracket Dimensions
Refer to Cat. No. 9201

PCI

VIDEO CARDS

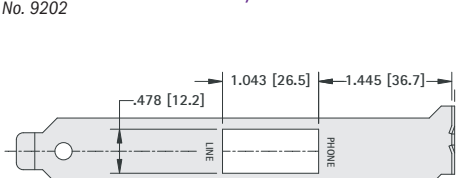


CAT. NO. 9201-1

For Bracket Dimensions
Refer to Cat. No. 9202

EISA/ISA

FAX - MODEM

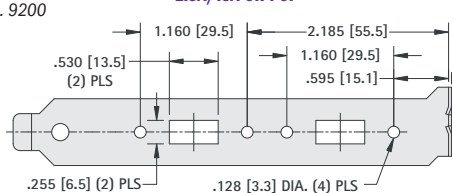


CAT. NO. 9202-1

For Bracket Dimensions
Refer to Cat. No. 9200

EISA/ISA OR PCI

USB

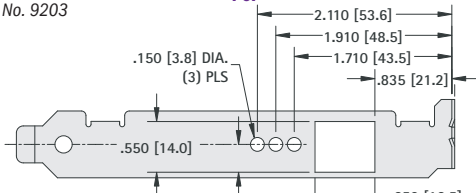


CAT. NO. 9200-10

For Bracket Dimensions
Refer to Cat. No. 9203

PCI

NETWORK

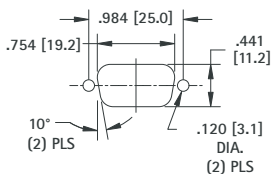


CAT. NO. 9203-2

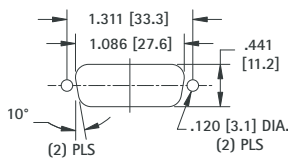
STANDARD PANEL CUTOUTS

BRACKET CUTOUTS & MARKINGS

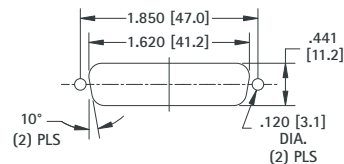
TYPE 9



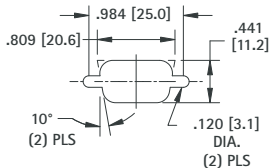
TYPE 15



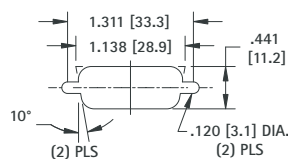
TYPE 25



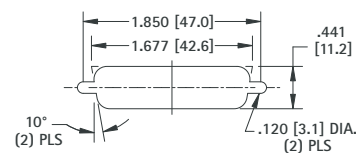
TYPE 9A



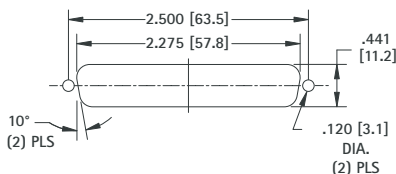
TYPE 15A



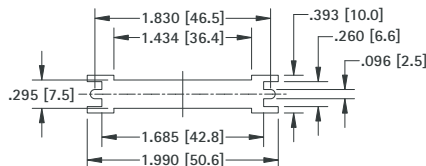
TYPE 25A



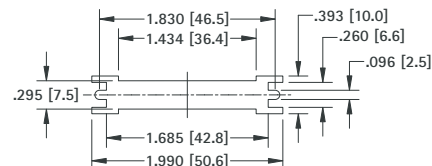
TYPE 37



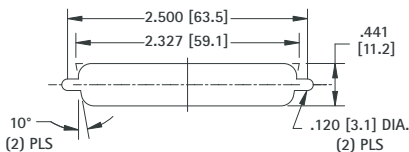
SCSI 1 - 50 PIN



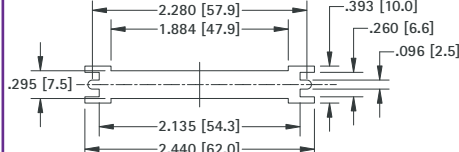
SCSI 2.3 OR 4 - 50 PIN



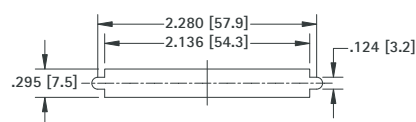
TYPE 37A



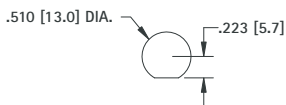
SCSI 1 - 68 PIN



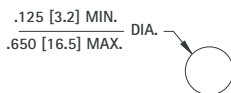
SCSI 2.3 OR 4 - 68 PIN



BNC



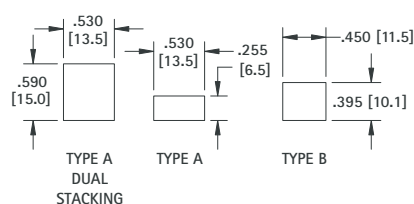
ROUND



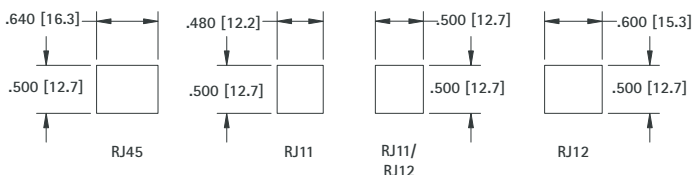
RECOMMENDED DIAMETERS

- PS/2 = .650 (16.5)
- Mini-Din = .400 (10.2) to .650 (16.5)
- Stereo Jacks = .280 (7.1)
- Phono Jacks = .400 (10.2)

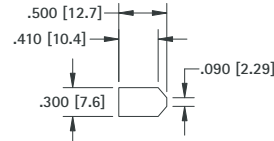
USB



RJ11 - RJ45



IEEE 1394 - "FIREWIRE"



STAMPED IDENTIFICATION MARKINGS

- AUDIO IN
- AUDIO OUT
- LINE IN
- LINE OUT
- VGA IN
- VGA OUT
- SVIDEO IN
- SVIDEO OUT
- VIDEO IN
- VIDEO OUT
- CAMERA IN
- TUNER OUT
- INPUT
- OUTPUT
- MIC
- S/P DIF
- PHONE
- LINE
- HANDSET
- ISDN

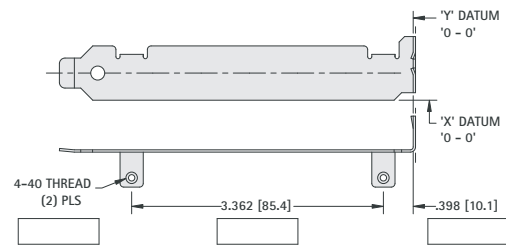


EISI/ISA or PCI



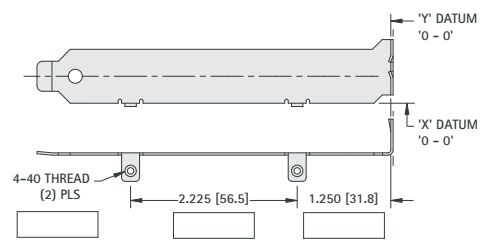
- CAT. NO. 9200
- CAT. NO. 9201 (Ribbed)
- CAT. NO. 9230

PCI with TABS



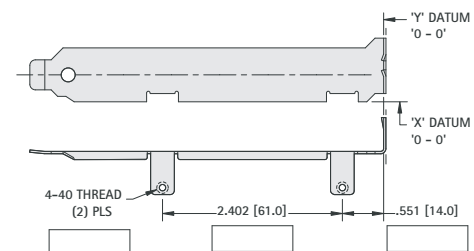
- CAT. NO. 9203

EISA/ISA with TABS



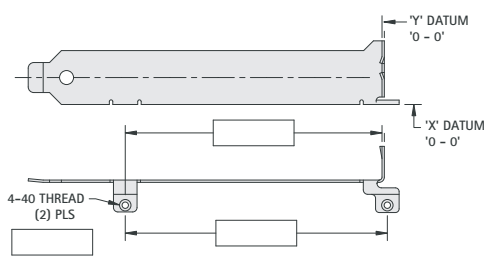
- CAT. NO. 9202

EISA/ISA with TABS



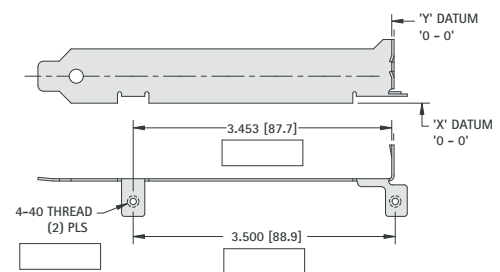
- CAT. NO. 9206

EISA/ISA with TABS



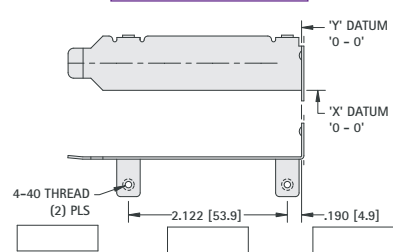
- CAT. NO. 9205
- CAT. NO. 9207

EISA/ISA with TABS



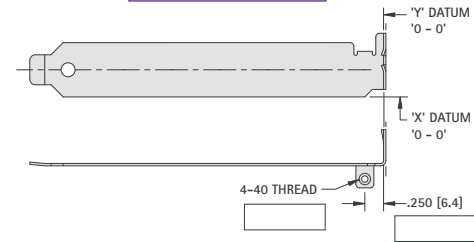
- CAT. NO. 9208

LOW PROFILE with TABS



- CAT. NO. 9231

PCI with TAB



- CAT. NO. 9204

If you do not have your own drawing, please use the worksheet provided.

- STEP 1:** Select a standard blank configuration PCI or EISA/ISA, with or without tabs.
- STEP 2:** If you've selected a standard blank with tabs and the tab locations do not meet your requirements, indicate the dimensions in the boxes.
- STEP 3:** Select your standard panel cutouts (page 110) and place them on your selected drawing.
- STEP 4:** Use Datum's X and Y on drawing, to indicate the precise location of the center lines of the cutout(s).
- STEP 5:** For stamped identification markings (page 110) indicate the approximate location(s).
- STEP 6:** Quantities Required: _____
If you have any questions, please contact our application engineers.

Name: _____ Title: _____
 Company: _____
 Address: _____
 Phone: _____ Fax: _____

For prompt quotations fax, mail or e-mail this worksheet.